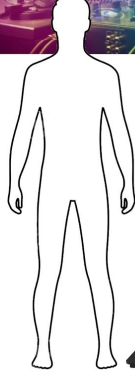
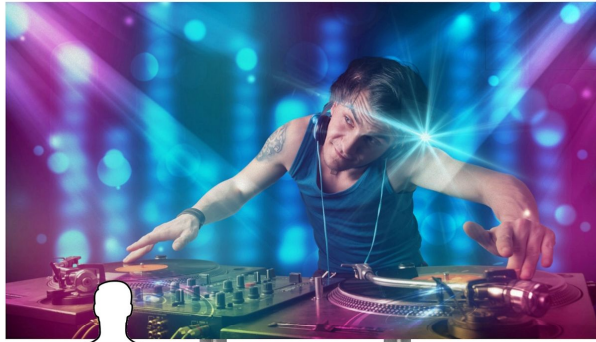


MOBILE LED 135**SCREENLIFTER****Ready in less than 3'****ScreenLifter Mobile LED 135 • 1.5 • Roll in - Unload - Start the Show in less than 3 Minutes!**

With the ScreenLifter Mobile LED 135 • 1.5 we offer you in cooperation with the established LED manufacturer Leyard® a comfortable, save and through brilliant picture quality convincing Plug-and-Play LED presentation system.

The 1.5 mm Leyard® video wall impresses with its excellent image quality, extremely slim design and the time-saving front-service layout.

Of course, the new ScreenLifter Mobile LED 135 • 1.5 offers the usual comfortable features, such as the established ScreenLifter display model series. Thus, the ScreenLifter Mobile LED 135 unloads fully automatically from the flight case at the touch of a button and can then be extended steplessly up to a height of 3.17 meters (upper edge).

Furthermore, the pre-assembled, high-resolution and highly sensitive LED modules are optimally protected from damage during transport by means of three integrated shock absorber systems. The assembly and disassembly as well as the positioning take place without tools and heavy equipment within a few minutes. This saves you valuable assembly time, personnel costs and effectively protects your video wall from damage.

FEATURES & FUNCTIONS

- Mobile LED 135 • 1.5 FULL HD System
- Brilliant Full-HD LED video wall
- Remote control capability via Mobile App
- Electric transport- and positioning system
- Stepless height-adjustable up to 3,17 m
- Tool free set up/ ready to run within 3 min!
- Flight-Case with electric unload function
- Transport size: 315 (L)x 200 (H)x 82 cm (W)
- Transport: 3,5 t truck with board gate
- Doorway: 198 cm x 82 cm (H x B)
- System weight: 350 Kg

IMAGE PROPERTIES

Screen size	135" / 343 cm
Screen dimensions	304 cm (W) x 171 cm (H)
Aspect ratio	1.920 x 1.080 Full HD
Pixel pitch	1.5 mm
Brightness	600 cd/m ²
Viewing angle	H 160° (H) / V 140° (V)
Framerate	50/60Hz
Inputs	HDMI, DVI, DP, USB
Media player	PIP, Scrolling Text, Split Screen
Input voltage	230V AC, 50/60Hz
Power consumption	max. 1.4 KW Video wall