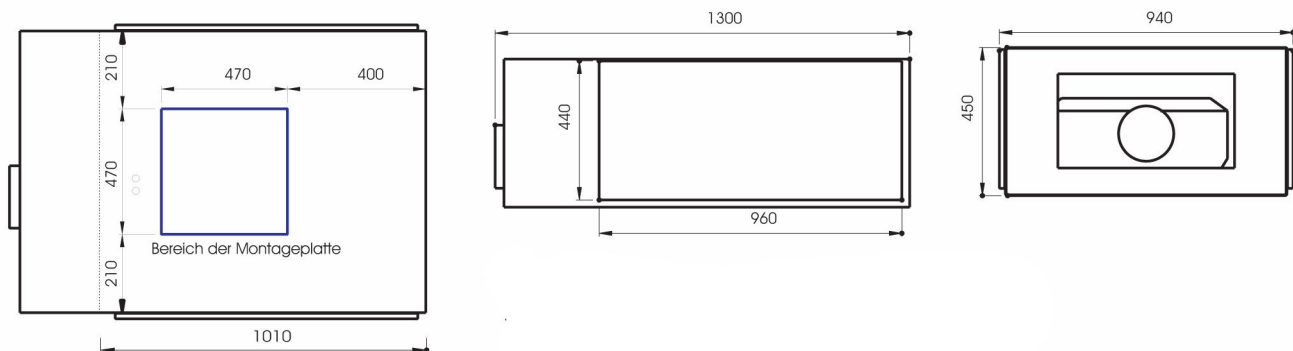


**CP 1500**

Air-conditioned projector housing with integrated dual-circuit cooling system in a compact design for LCD and DLP projectors in continuous operation

The case is adapted for outdoor use as well due to optional winter control and self-regulating ceramic heater!

**FEATURES & FUNCTIONS**

- Vandalism proofed housing in aluminum
- Powder coating of choice (RAL)
- Projection window coated for antireflection
- Solid integrated mounting plate
- Underground ventilation of the projector
- Pulsing and overheating protection
- Automatic condensate evaporation
- Electronic thermostat with digital display

**TECHNICAL DATA**

- Cooling capacity approx. 1,5 KW
- Radiation power (circular flow) 130-400m<sup>3</sup>/h
- Ambience temperature: 5°-35°C
- With optional winter control: -10° / +35°C for heating
- Regulation hysteresis approx. +/- 2°C
- Voltage 230V/50Hz/1Ph
- Power consumption 900 W
- Weight: 105 Kg